

# Biosolids Workshop: Linking Industry and Research

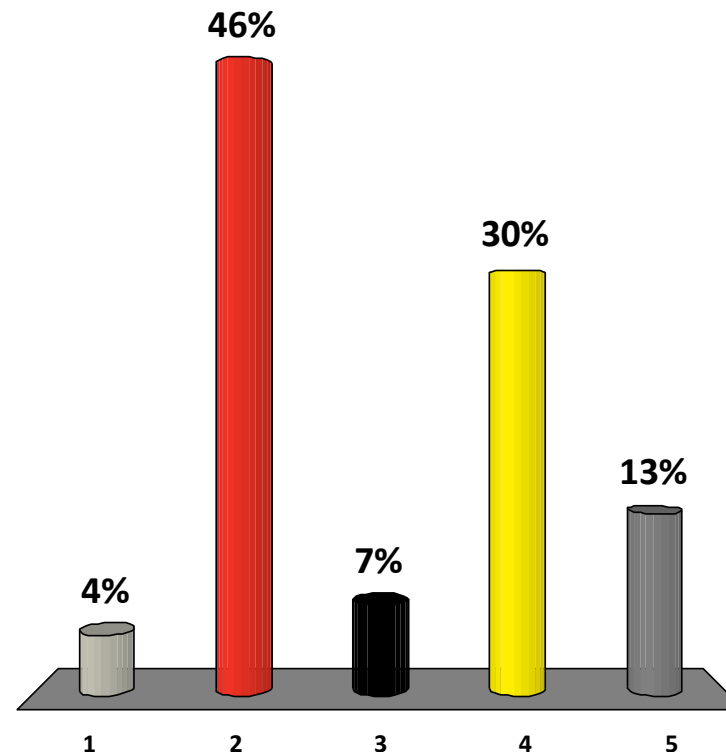
Thursday 6<sup>th</sup> December 2012

[www.rmit.edu.au](http://www.rmit.edu.au)



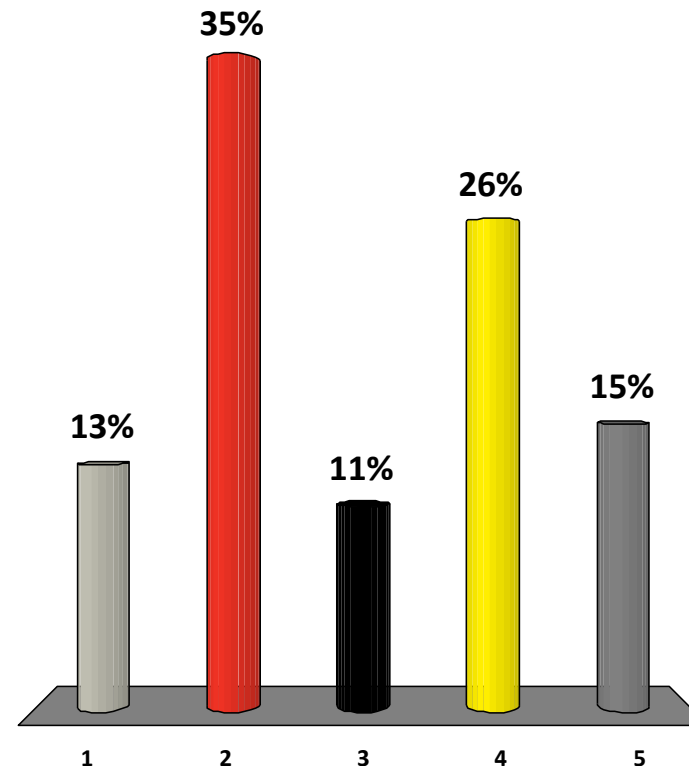
# 1. Do you think the land application of C1T1 biosolids poses a risk to public health?

- 1. Yes
- 2. No
- 3. Likely
- 4. Unlikely
- 5. Uncertain



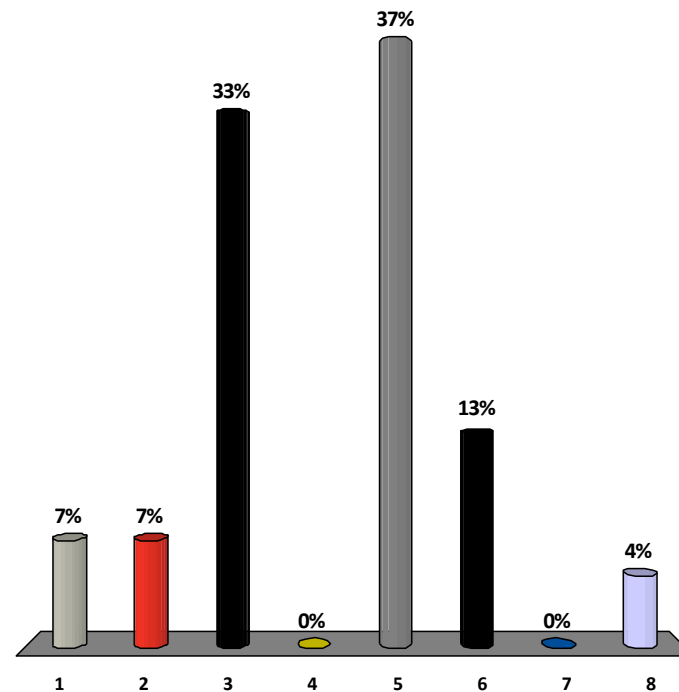
## 2. Do you think the land application of C1T1 biosolids poses a risk to the environment?

1. Yes
2. No
3. Likely
4. Unlikely
5. Uncertain



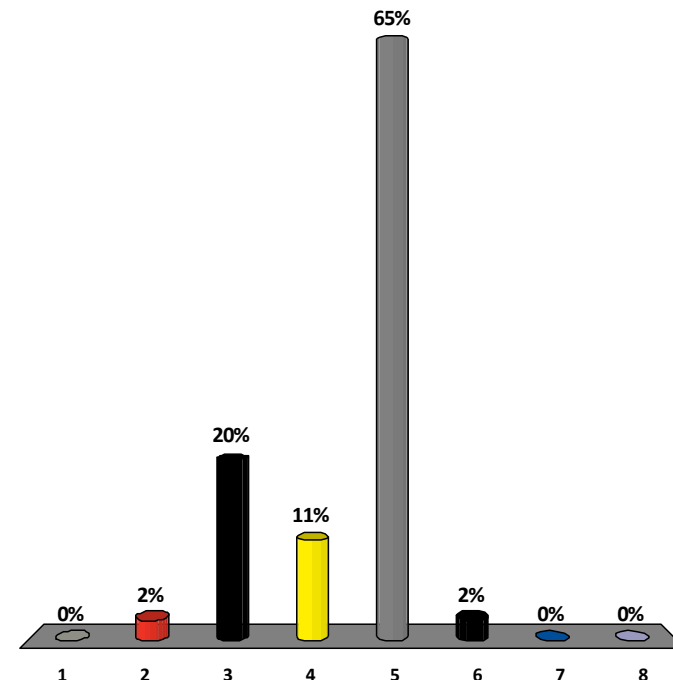
### 3. What is the main factor affecting long-term sustainable biosolids management?

1. Treatment Processes
2. Pathogens
3. Chemical Pollutants
4. Odour
5. Community Attitudes
6. Regulations
7. Climate Change
8. Other



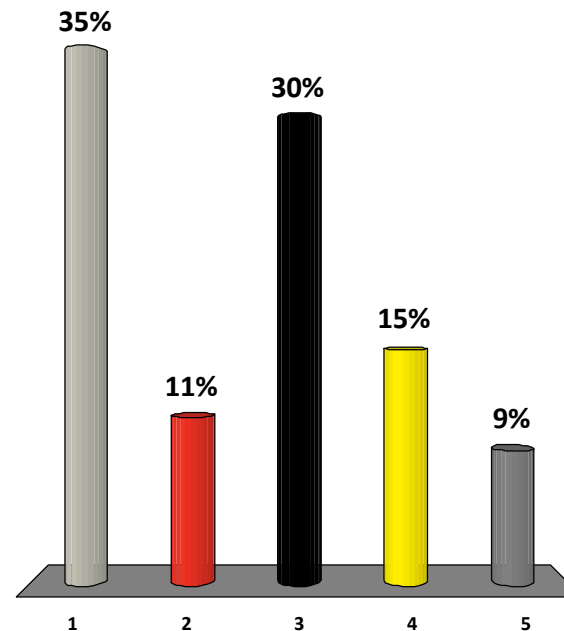
## 4. In terms of biosolids use, which practice do you believe is the best long-term sustainable solution?

1. Landfill
2. Incineration
3. Energy Recovery
4. Geotechnical Fill
5. Land Application
6. Contaminated Land Remediation
7. Stockpiling
8. Other



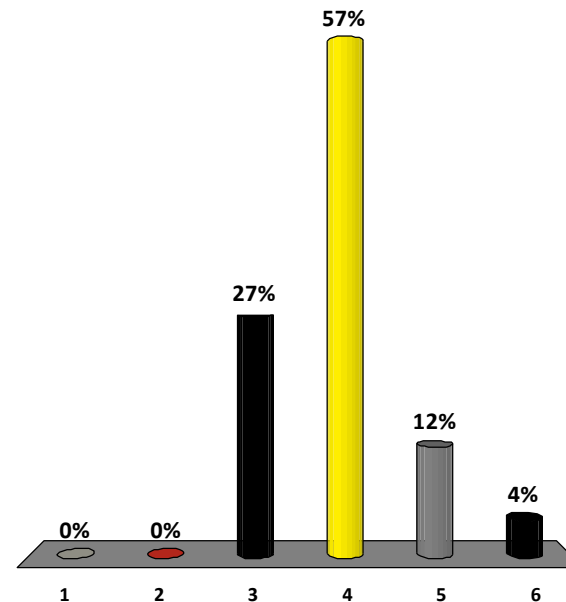
## 5. Do you think that nutrient recovery from water treatment will become a legislated requirement in the future?

1. Yes
2. No
3. Likely
4. Unlikely
5. Uncertain



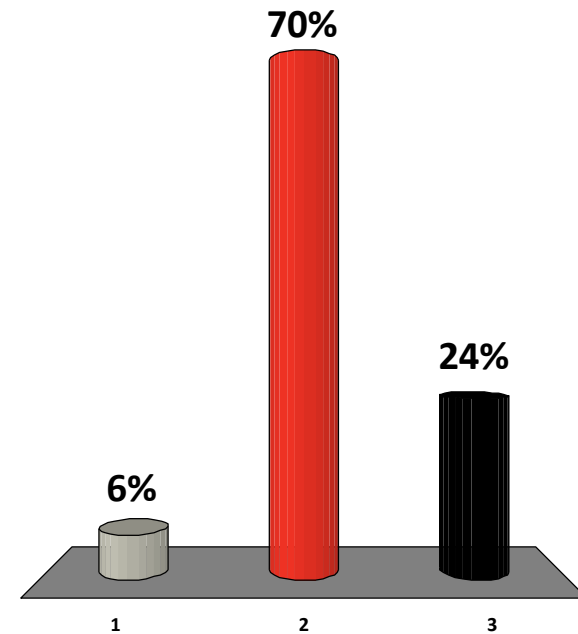
## 6. What is the best legislative approach for managing biosolids?

1. Current Approach
2. Slight updating of Victorian guidelines
3. Major review/updating of Victorian guidelines
4. National Code of Practice
5. Reclassifying biosolids
6. Uncertain



## 7. Do you think that the public understand the potential benefits of biosolids reuse?

1. Yes
2. No
3. Maybe





## 8. What is your preferred approach to informing the public on the benefits of biosolids reuse?

1. Public Seminars
2. Leaflets/Brochures
3. Focus Groups
4. Advertising
5. Not Necessary
6. Other

