

Biosolids Workshop: Linking Industry and Research

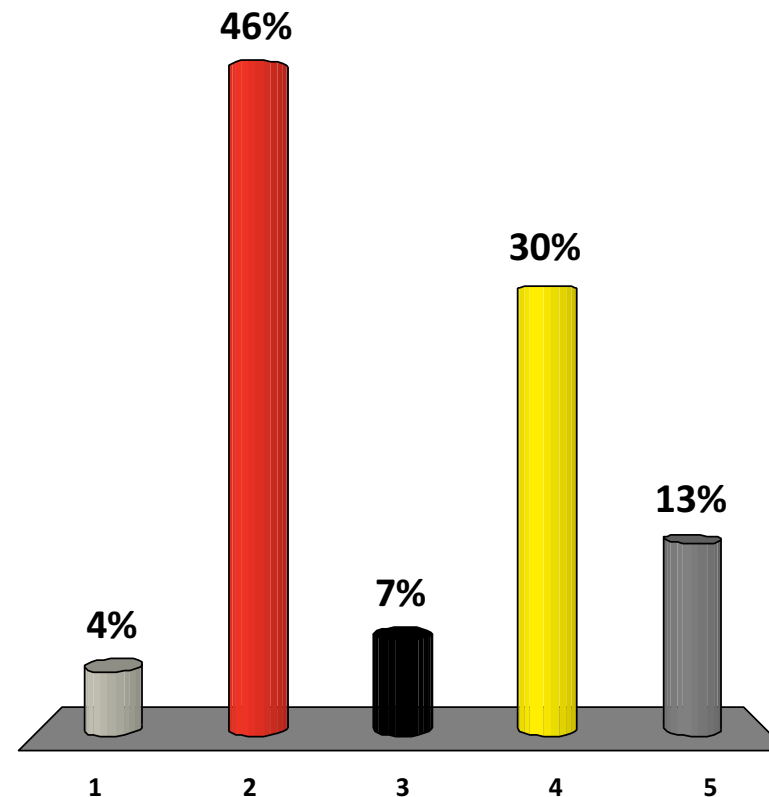
Thursday 6th December 2012

www.rmit.edu.au



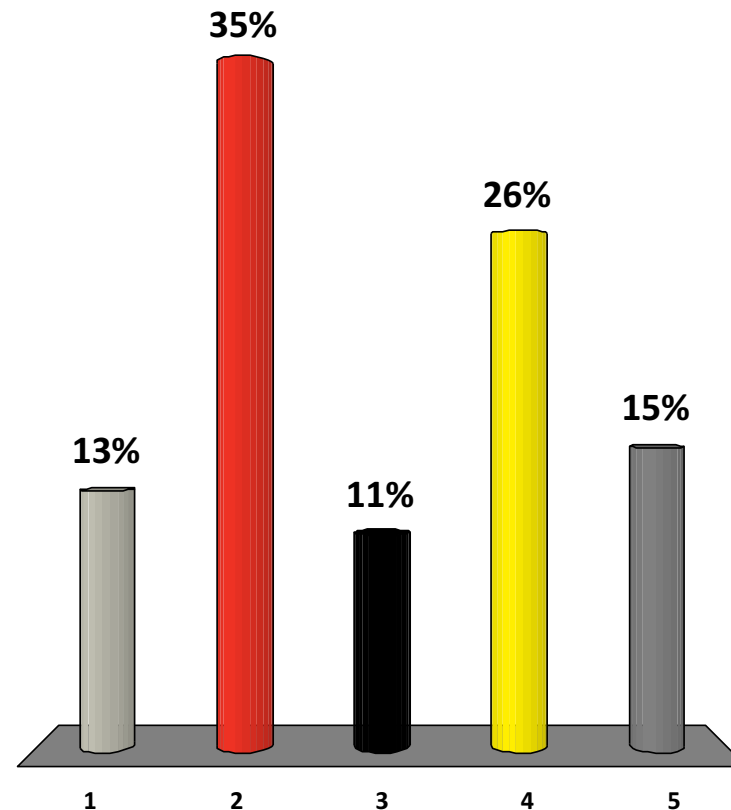
1. Do you think the land application of C1T1 biosolids poses a risk to public health?

1. Yes
2. No
3. Likely
4. Unlikely
5. Uncertain



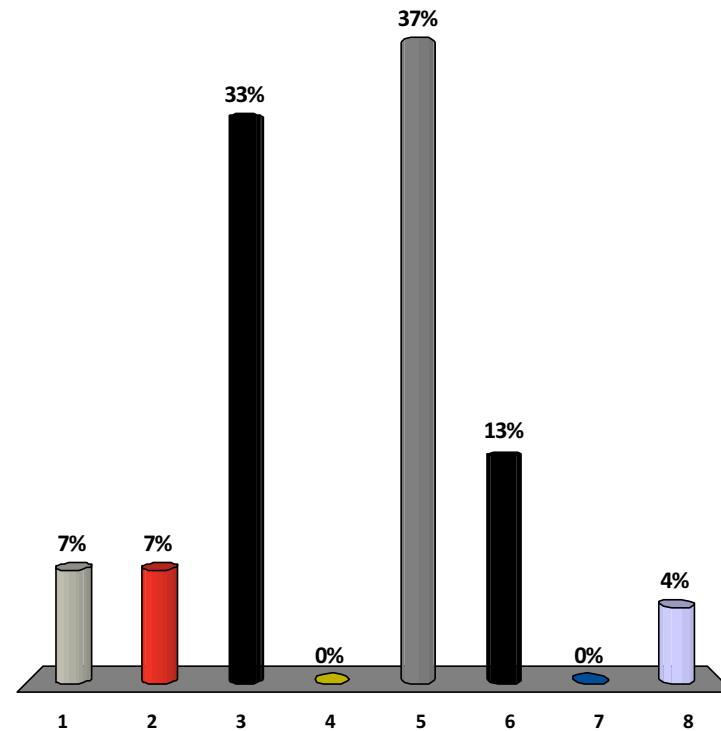
2. Do you think the land application of C1T1 biosolids poses a risk to the environment?

1. Yes
2. No
3. Likely
4. Unlikely
5. Uncertain



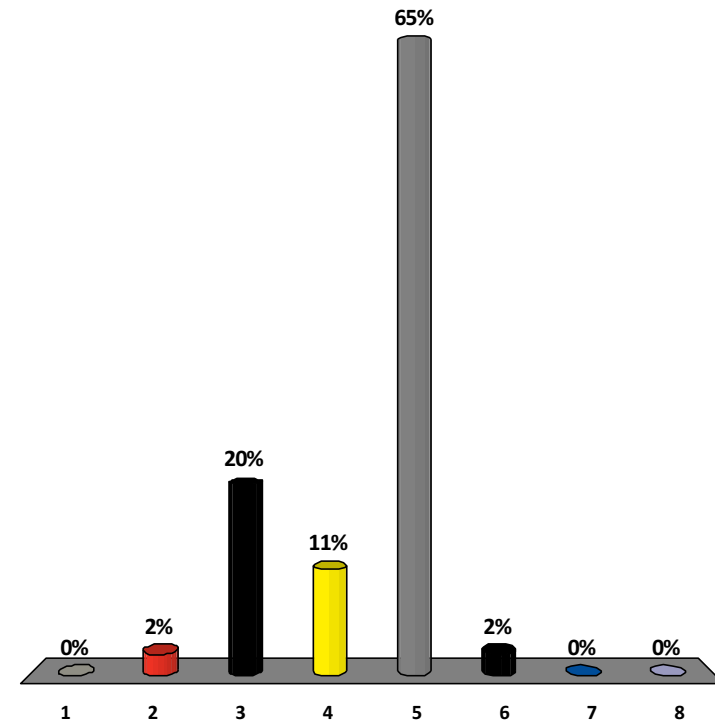
3. What is the main factor affecting long-term sustainable biosolids management?

1. Treatment Processes
2. Pathogens
3. Chemical Pollutants
4. Odour
5. Community Attitudes
6. Regulations
7. Climate Change
8. Other



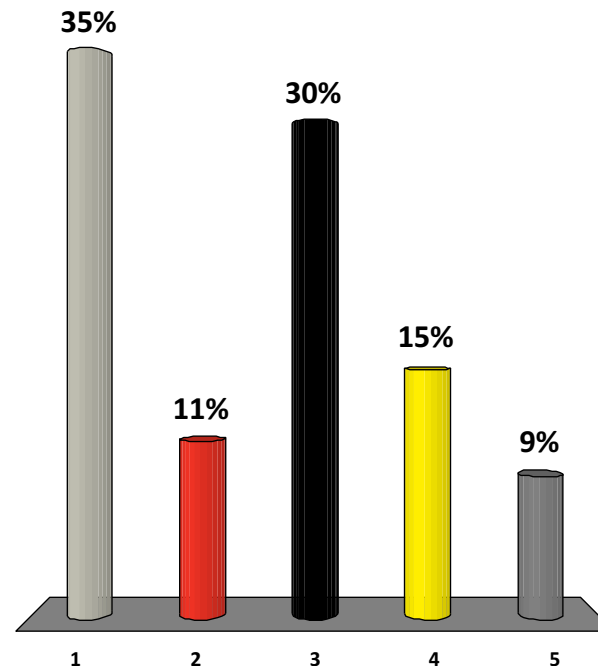
4. In terms of biosolids use, which practice do you believe is the best long-term sustainable solution?

1. Landfill
2. Incineration
3. Energy Recovery
4. Geotechnical Fill
5. Land Application
6. Contaminated Land Remediation
7. Stockpiling
8. Other



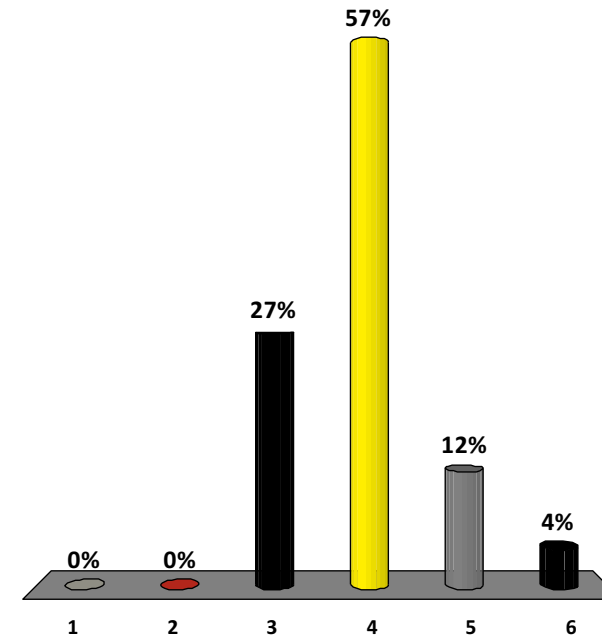
5. Do you think that nutrient recovery from water treatment will become a legislated requirement in the future?

1. Yes
2. No
3. Likely
4. Unlikely
5. Uncertain



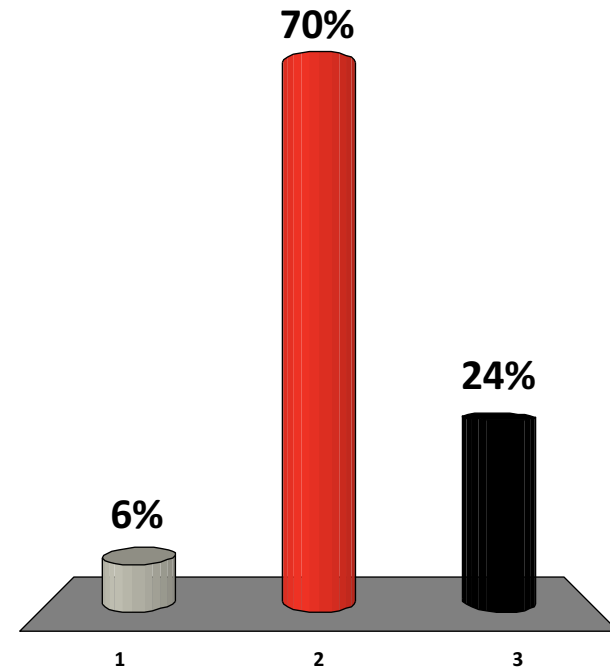
6. What is the best legislative approach for managing biosolids?

1. Current Approach
2. Slight updating of Victorian guidelines
3. Major review/updating of Victorian guidelines
4. National Code of Practice
5. Reclassifying biosolids
6. Uncertain



7. Do you think that the public understand the potential benefits of biosolids reuse?

1. Yes
2. No
3. Maybe



8. What is your preferred approach to informing the public on the benefits of biosolids reuse?

1. Public Seminars
2. Leaflets/Brochures
3. Focus Groups
4. Advertising
5. Not Necessary
6. Other

